

AP JOINT FILL 800

TWO COMPONENT, SEMI-RIGID JOINT FILLER.



DESCRIPTION

AP JOINT FILL 800 is a two-component hybrid polyurea joint filler with fast reaction allowing for shave time in as little as 5 minutes. The fast reaction allows for minimal down time and facilities to be in operation quickly.

ADVANTAGES

- Fast cure/shaveable in 5 minutes
- Chemical cure
- Impact resistant
- Low temperature cure

FIELD OF APPLICATION

- Concrete joint filling
- General concrete repair applications requiring a fast-set semi-rigid product.
- Sealing random cracks/crack chasing

APPLICATION

Note: the following are a few typical application procedures. In case of other jobsite parameters, please contact our technical department.

PREPARATION OF THE SUBSTRATE

Pressure wash or blow out entire repair substrate with oil free compressed air to remove all contaminations, loose debris, or existing coatings.

PREPARATION OF THE PRODUCT

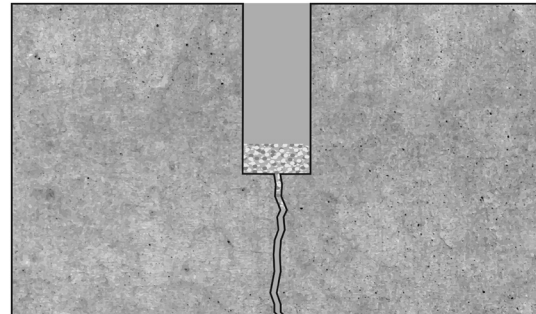
Premix B component using a low-speed drill with a paddle mixer ensuring not to whip air into the product. If using cartridges, shake by hand.

PREPARATION OF THE EQUIPMENT

Power on AP Joint Fill Machine and dispense material through plastic static mixer into a cup. Always perform cup test to ensure proper mixing ratio.

APPLICATION

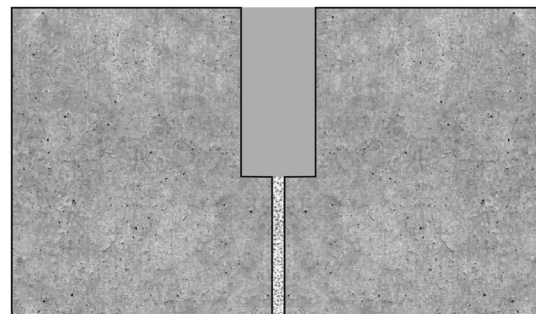
- Address all spalls and cracks prior to installation. See AP Spall Repair 850 technical datasheet for more information.
- Clean the crack with oil free compressed air.
- If water-assisted saws were used in removal, wait for substrate to dry or apply heat to expedite this process. Blow off any cement dust or paste left behind by wet sawing. Only apply product to a clean dry substrate.
- Fill joints with AP Joint Fill 800. Overfill slightly and shave off excess when joint fill is tack-free.



2" deep saw cut.

Silica sand bed optional, no backer rod.

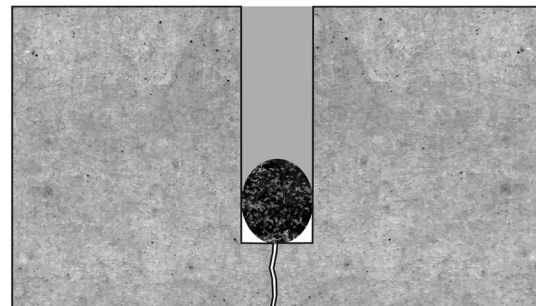
Control joint. (Saw cut to control location of crack. No backer rod.)



Saw cut construction joint.

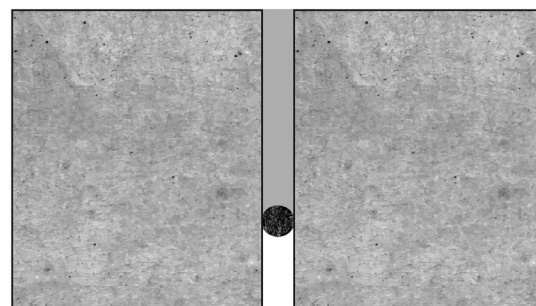
Silica sand under saw cut.

Construction joint that was later saw cut 2" deep. (No backer rod.)



Minimum 2" depth with backer rod.

Control joint. (Saw cut to control location of crack. With backer rod below 2" mark.)



Minimum 2" depth with backer rod.

Construction joint. (With backer rod below 2" mark.)

- Touch up joint with grinder and ZEC wheel as necessary. Do not wait too long or material becomes difficult to shave.

REQUIRED TOOLS

- **10 Gallon Units:** AP Joint Fill Machine
- **Cartridges:** 300x300 cartridge gun
- Air compressor with oil separator
- Concrete grinder with ZEC wheel

CLEANING AND MAINTENANCE OF MACHINE

Disconnect A and B hoses from AP Joint Fill Machine after application. Pump excess material into pails tightly capping, sealing and saving for later use. Proceed to flush the AP Joint Fill Machine with AP Flush 121. Pump AP Flush 121 through hoses until clean flush is coming out, then recirculate back into A and B hoppers for 3 to 4 minutes. Do not mix A and B flush. Grease the gun at the gun grease zerk fittings. Pour 1 quart of motor oil into each empty hopper for storage.

COMPLIMENTARY PRODUCTS

Oven dry silica sand, shaving tool.

ADVICE / FOCAL POINTS

Cold temperatures may delay cure time. The product will cure between -20 – 120F. Exposure to UV will cause discoloration, but will not break down physical properties. Cohesive and adhesive separations are designed to occur and should not be considered a failure of the product. Solvent wipe and re-application is recommended for spot repairs.

LIMITATIONS

- Not for exterior use
- Not for use in expansion joints

TECHNICAL DATA

Physical Properties -

AP Joint Fill 800	Part A	Part B	Mixed
Mix Ratio By Volume	1	1	

Specific Gravity	1.07	1.24	1.155
Appearance	Liquid	Liquid	Solid
Color	Gray	Clear	Gray

Density	8.7 lb/gal	9.1 lb/gal	8.9 lb/gal	ASTM D 1475
Viscosity	1,535	2,500	Self Levelling	ASTM D 2196
Working Time	-	-	18 seconds	ERF-13-70
Gel Time @ 77 °F	-	-	30 seconds	ASTM D 2471

Properties will vary depending on application conditions.

ESTIMATING

AP Joint Fill 800 occupies 231 cubic inches per gallon. Estimate 15% excess for overfill/shave for AP Joint Fill 800.

PACKAGING

- 10 Gallon Units
- 325 x 325 ml Cartridges / Case of 12

SHELF LIFE AND STORAGE

Store between 50° - 80° F (10° - 26°C). This product has 6 month shelf life from date of manufacture if stored in a dry warm place at 60-80° F in original sealed containers. Lower temperature (below 60° F) may cause a partial crystallization of the resin. If crystallization has occurred, heat the resin in its original container placing it into another container with hot water. Change water to keep it hot for a few hours. Cool down to 77° F. If viscosity of the resin is still higher than specified, repeat the procedure.

SAFETY PRECAUTIONS

Avoid contact with eyes and skin, always use personal protective equipment in compliance with local regulations. Read the relevant Safety Data Sheet before use. Safety Data Sheets are available on www.alchemy-spetec.com

When in doubt contact Alchemy-Spetec Technical Service.

FOR INDUSTRIAL USE ONLY. KEEP OUT OF REACH OF CHILDREN. NOT FOR INTERNAL CONSUMPTION. READ SAFETY DATASHEET PRIOR TO EVERY USE.